

Agra-GPS USB Firmware Update

Updating Agra-GPS Firmware with a USB via John Deere Monitor (2630/4240/4640).

Version 1.0
Revision A
Dec 2020



Contact information
Agra-GPS Ltd.
Box 2585
Stony Plain, AB
T7Z 1X9
CANADA
001 780 990 4052 Phone
www.agra-gps.com

Release Notice

This is the December 2020 release (Revision A) of the Agra-GPS ITCEExtend update instructions.

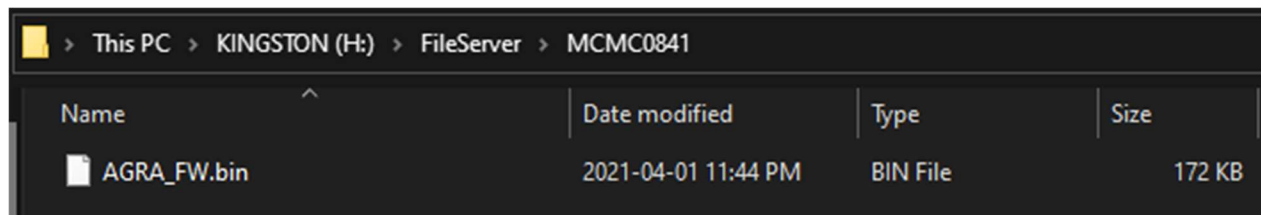
Disclaimer

While every effort has been made to ensure the accuracy of this document, Agra-GPS Ltd assumes no responsibility for omissions or errors. Nor is any liability assumed for damages resulting from the use of information contained herein. Agra-GPS Ltd shall not be responsible or liable for incidental or consequential damages or a loss of anticipated benefits or profits, work stoppage or loss, or impairment of data arising out of the use, or inability to use, this system or any of its components.

DO NOT USE THE Agra-GPS ITCEExtend IF YOU DISAGREE WITH THE DISCLAIMER.

Step 1: Loading the USB with firmware

First, the desired firmware needs to be loaded onto a USB with a specific file structure. Firmware must be placed inside of a folder titled <MCMC0841>, and that folder must be inside of a folder titled <FileServer> (USB\FileServer\MCMC0841\). The result should look similar the following.



Note: Everything in the <MCMC0841> folder will be transferred to the ITCExtend. It is important that the <MCMC0841> folder only contains the desired firmware.

The file must be called AGRA_FW.bin for the ITCExtend to accept the firmware properly.

Step 2: Connect the USB to a John Deere monitor and update firmware

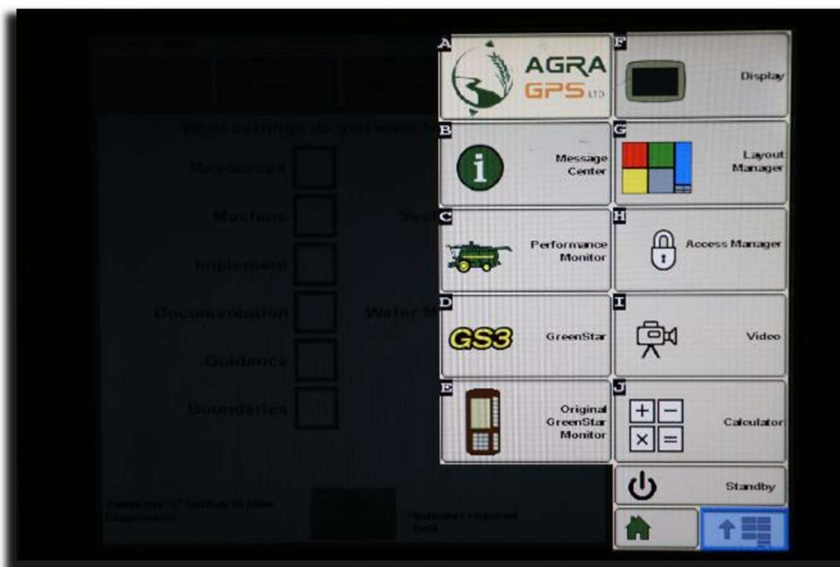
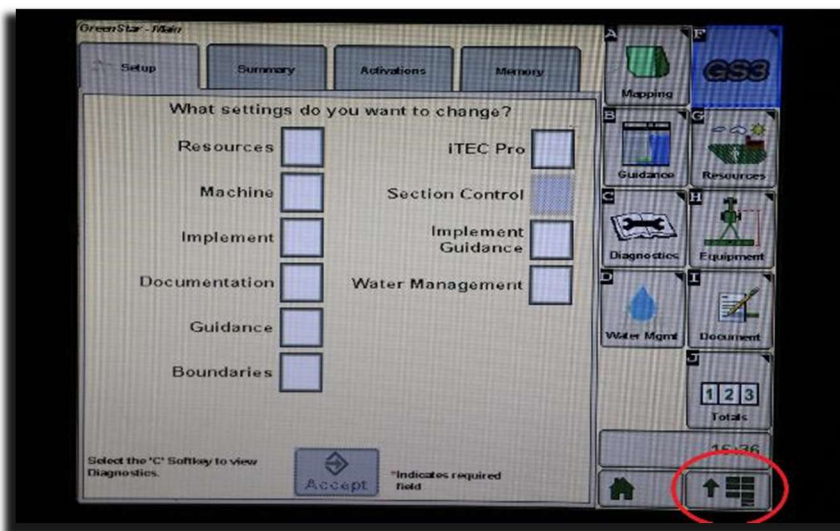
First insert the USB into the John Deere monitor, then navigate to the Agra-GPS iso application that will be loaded onto the John Deere monitor. The steps for doing so will look like the following.

4640/4240

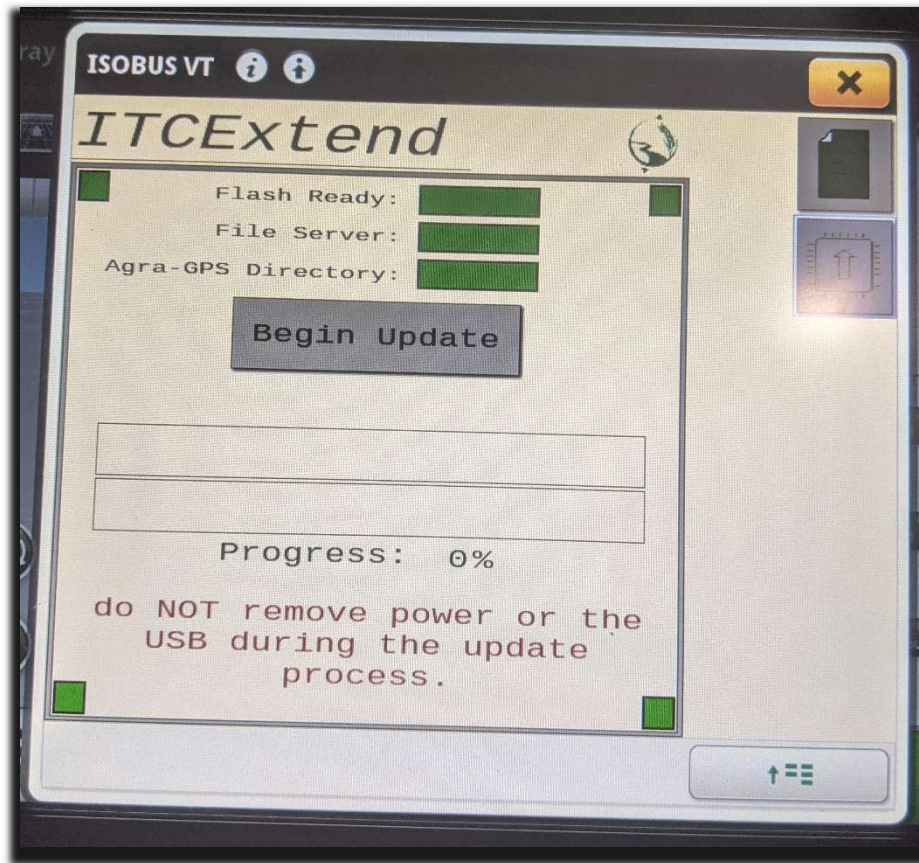




2630



Inside of the iso application navigate to the firmware update page. **To show the firmware update page you must tap the Agra-GPS logo 3 times in a row in the upper right corner of the Agra-GPS Isoapp.**



MAKE SURE THE 4 CORNER SQUARES MATCH THE COLOR THAT IS MARKED BY THE FIRMWARE VERSION YOU ARE ATTEMPTING TO TRANSFER. FAILING TO DO SAY MAY CAUSE THE UPDATE TO FAIL AND RENDER THE BOARD INOPERABLE. E.g: The color of the four corners in this picture are green, so they software must be marked 'green'.

Check both the 'File Server' indicator and the 'Directory' indicator are green. The 'File Server' indicator shows that the John Deere file server is currently on the CAN bus. The 'Directory' indicator shows that the Agra-GPS specific directory is found on the USB that was inserted.

If both indicators are green, then the ITCEExtend is ready to begin updating the firmware. Simply press the 'Update Firmware' button and wait for the transfer to complete. **Do not power off or remove the USB during the update process.**

Note: Once the transfer has completed the ITCEExtend will need a full restart to flash the new firmware.

Troubleshooting

The ‘File Server’ indicator shows red: This means that the John Deere file server is not detected on the CAN bus. To make sure the JD file server is enabled navigate to the ‘Multiple Monitor’ section of the JD monitor and verify that the file server control function is enabled.

The ‘Directory’ indicator shows red: This means that the Agra-GPS manufacturer directory (MCMC0841) with firmware is not found. Verify that the file structure on the USB is correct and that the proper firmware is on the USB.

If everything is correct and the directory is not showing up, try removing and reinserting the USB. If that does not work, try removing all files on the USB except for the <FileServer\MCMC0841> folder. Currently file updating only works with 2630, 4240 and 4640 monitors.