

# USER'S MANUAL

## Agra-GPS CNH-JD Bridge for AFS/PLM Machines



Version 1.0  
Revision A  
March 2021



## **Introduction**

Congratulations on your purchase of the CNH-JD Bridge. The CNH-JD Bridge is designed to bridge the communication between a CNH machine (Autosteer ready) and a John Deere display (JD1800, JD2600, JD2630, JD4240 or JD4640). This provides autosteering capabilities and allows a JD display to create maps in the John Deere format.

The operator uses the JD display to create guidance lines. The current position is determined by a John Deere receiver and all this information is used by the CNH-JD Bridge to create steering instructions for the CNH machine. All conditions for autosteer such as minimum speed, steering enabled, etc. must be met by the CNH system before the autosteer engage option in the machine can be activated. The CNH-JD Bridge has been developed so that the user may use their John Deere equipment with the standard functionality when possible.

## **NOTICE**

This manual is not intended to replace the manuals for the CNH machine or the John Deere system. The operator must read and understand the manuals and instructions of these systems, before using the CNH-JD Bridge.

## Operating notes for the Agra-GPS CNH-JD Bridge

For autosteer activation you must follow the "normal" JD steps to be autosteer ready:

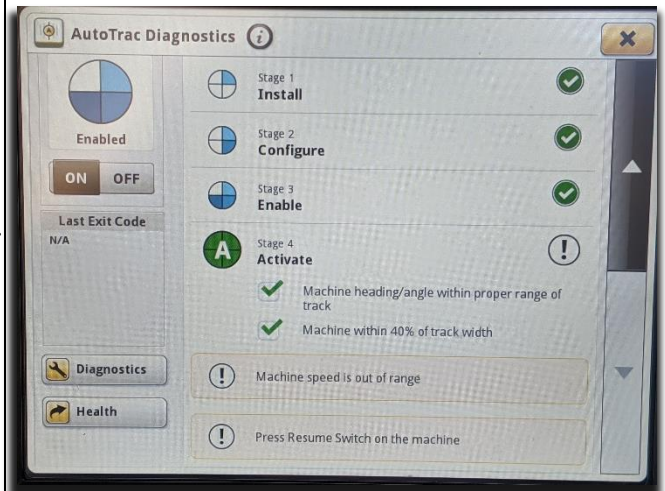
- Create an AB-line
- Move from "Steer OFF" to "Steer ON" (3 sections of the guidance 'pie') on the JD display.

**NOTE:** In order to go from "Steer OFF" to "Steer ON" the user must satisfy all guidance requirements for the John Deere monitor. This includes being close to the AB-line.

Your machine must also be in "autosteer ready" mode, which means you must have a field gear selected, drive at a minimum speed and have moved your steering wheel at least once after engine start.

The autosteer is then enabled by pressing the built-in resume button on the throttle control lever.

Autosteer settings can be adjusted within the JD display.



## Enabling Machine Side Steering

Locate the following panel. It is located on the headliner to the right of the operator's seat. To enable autosteer, toggle the roadmode switch/autosteer switch (rightmost bottom picture) into the off-roadmode position. This will take the Agra-GPS bridge out of roadmode.

Next, hold down the upper part of the ISOBUS auto switch (leftmost bottom picture) for at least a second to enable assignment requests and allow autosteering.



If all conditions are met, the steering 'pie' on both systems should be 3/4, and the user can use the built in engage button located on the throttle to engage autosteering.

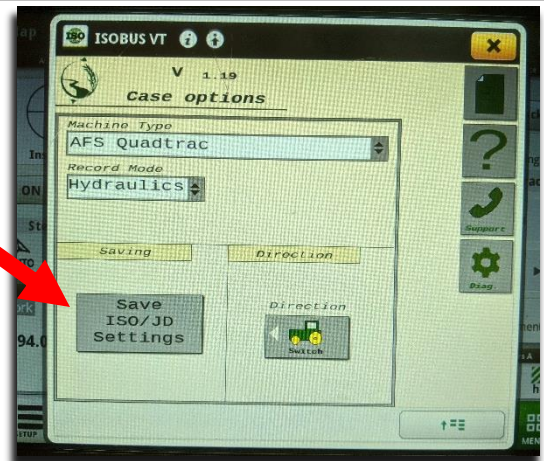


## Saving Settings and Resetting Steering System

Due to the nature of the steering system, the saving of settings can interrupt the steering system operation. Due to this, whenever JD settings or Agra-GPS ISO application settings are changed, the user must manually save their changes at an appropriate time. To do this, the user must navigate to the Agra-GPS ISO application press the save settings button.

In the event that the saving of settings interrupts the steering system operation, the steering system may go into automation faulted mode (shown right).

To re-enable automation, simply hold down the upper part of the ISOBUS auto switch for at least a second. The user will also be prompted to perform this action when the saving of settings results in an automation timeout.



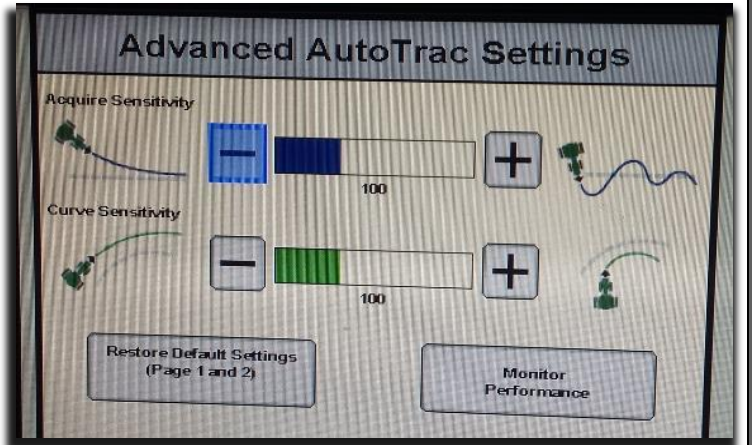
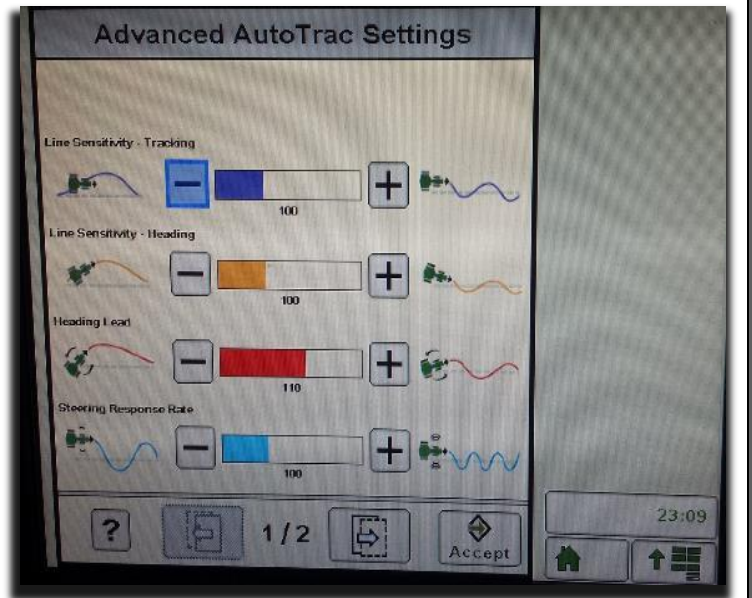
Automation faulted



# Adjusting JD Steering Settings

Using the JD display you may adjust your steering performance. Most machines will perform optimally with all JD settings at 100.

If a change is required, find an open area where you can travel at target speed and adjust one parameter at a time until you are satisfied with the steering performance.



## ISO Application

The CNH bridge comes with an ISO application that will be loaded onto the John Deere monitor. The app should automatically store itself on the monitor after the first few minutes of the initial startup. On subsequent runs the app will load itself from memory as soon as possible. The CNH app includes:

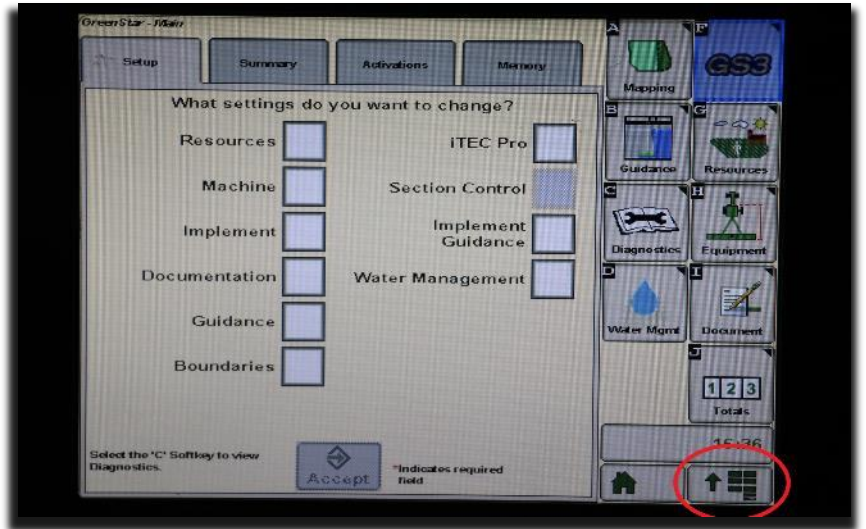
- Option to change the machine type
- Help page
- Support page
- Diagnostic page

Where to find the CNH ISO application on the John Deere monitor:

On a John Deere 4640 the application will be loaded in the ISOBus VT section on the main page of the display.



On John Deere 1800, 2600, 2630 the application will be shown in the side menu of the John Deere display. The side menu is opened by clicking the button on the bottom right of the display.



**NOTE:** John Deere 1800 and 2600 monitors do not show a loading bar for ISO applications, while 2630,4240 and 4640 monitors do.



If the ISO application is not loaded:

- Try clearing the monitor's memory. On 2630 monitors this can be done in the Message Center in the side menu. Go to the Cleanup tab, check controllers, then Begin Cleanup. On 4640 monitors this can be done in the info page of the ISOBus VT. Navigate to the ISOBus VT window and click the info button at the top of the page, then press Clean Up ISO Bus VT.
- Do a hard reset of the John Deere monitor (Unplug it, then plug it back in).
- Do a full restart of the machine. Remember the app may take a few minutes to load.