

INSTALLATION MANUAL

Agra-GPS AGCO-JD Bridge for MT10xx-tractors



Version 1.0
Revision A
January 2017



Contact information
Agra-GPS Ltd.
Box 2585
Stony Plain, AB
T7Z 1X9
CANADA
001 780 990 4052 Phone
www.agra-gps.com

Release Notice

This is the January 2017 release (Revision A) of the AGCO-JD Bridge for MT10xx Installation Manual.

Disclaimer

While every effort has been made to ensure the accuracy of this document, Agra-GPS Ltd assumes no responsibility for omissions and errors. Nor is any liability assumed for damages resulting from the use of information contained herein. Agra-GPS Ltd shall not be responsible or liable for incidental or consequential damages or a loss of anticipated benefits or profits, work stoppage or loss, or impairment of data arising out of the use, or inability to use, this system or any of its components.

DO NOT USE THE AGCO-JD Bridge IF YOU DISAGREE WITH THE DISCLAIMER.

Important Safety Information

Read this manual and the operation and safety instructions carefully before installing the AGCO-JD Bridge.

- Follow all safety information presented within this manual.
- If you require assistance with any portion of the installation or service of your equipment, contact your Agra-GPS for support.
- Follow all safety labels affixed to the system components. Be sure to keep safety labels in good condition and replace any missing or damaged labels. To obtain replacements for missing or damaged safety labels, contact Agra-GPS.

When operating the machine after installing the AGCO-JD Bridge, observe the following safety measures:

- Be alert and away of surroundings.
- Do not operate the AGCO-JD Bridge system while under the influence of alcohol or an illegal substance.
- Remain in the operator's position in the machine at all times AGCO-JD Bridge system is engaged.
- Determine and remain a safe working distance from other individuals. The operator is responsible for disabling the AGCO-JD Bridge system when the safe working distance has been diminished.
- Ensure the AGCO-JD Bridge is disabled prior to starting any maintenance work on the machine or parts of the AGCO-JD Bridge system.
- Follow all safety instructions from the AGCO system as well as the JD system!
- The AGCO-JD Bridge must only be used in the field, never on the street!

Electrical Safety

- Always verify that the power leads are connected to the correct polarity as marked. Reversing the power leads could cause severe damage to the equipment.
- Verify that all cables and connectors are not going over sharp edges and are not pinned, as this could cause power shortages and/or malfunctions.

Introduction

Congratulations on your purchase of the AGCO-JD Bridge. The AGCO-JD Bridge is designed to bridge the communication between a MT10xx tractor (autosteer ready) and a John Deere display (2600 or 2630). This allows a JD display to create maps in the John Deere format and also provides straight AB-Line autosteer.

The operator used the JD display to create AB-lines. The current position is determined by a John Deere receiver and all this information is used by the AGCO-JD Bridge to create steering instructions for the tractor. All conditions for autosteer such as minimum speed, steering enabled etc. Must be met by the AGCO system before the autosteer engage option in the tractor can be activated.

NOTICE

This manual is not intended to replace the manuals for the tractor or the John Deere system. The operator must read and understand the manuals and instructions of these systems, before using the AGCO-JD Bridge.

Installation of the AGCO JD Bridge (10xx models)

Step 1: Mounting the AGCO-JD Bridge

The AGCO-JD Bridge is installed right of the driver seat.

Removing the plastic cover, you will find the fuse panel

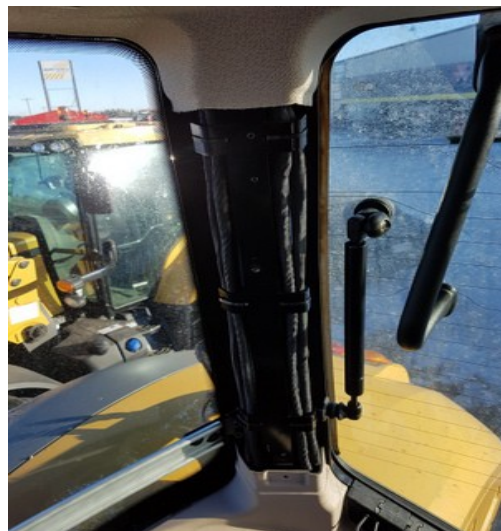
To access the connector for steering, you need to remove the whole plastic cover right to the seat.



A torx 25 is used in newer machines.



Start with the back pillar cover.



Then remove the panel behind the seat. We also recommend to remove the black cable cover.



Once all plastic screws are removed you can now pull the plastic cover towards the seat and gain access to the connectors.



You have now access to the connectors. You will need to disconnect the gray (4214) and the brown (4013) connectors.

You will need to insert the cable adapter which came with your AGCO bridge. It goes in between the gray and brown connectors and provides access to the valve and iso canbus of the tractor.



Connect the black ground wire from the adapter to the ground port just in front of the connector panel.



Step 2: Mounting the JD Display

The mounts for the JD display are NOT part of the AGCO-JD Bridge, however they can either be ordered as an optional item from AgraGPS or directly from RAM.

The JD-display may be mounted many different ways.

You may use the standard JD mounts or a RAM mount. RAM-270U + 2 * 1.5" balls (RAM-202U) + 4" double socket arm (RAM-201U)

<http://www.rammount.com/part/RAM-270U>



Step 3: Mounting the JD Receiver

The AGCO-JD Bridge does NOT include a standard JD-receiver bracket

You want to create a mount which is centered left-right and as far forward as possible on the cab roof.



ISO Application

The Fendt bridge comes with an ISO application that will be loaded onto the John Deere monitor. The app should automatically store itself on the monitor after the first few minutes of the initial startup. On subsequent runs the app will load itself from memory as soon as possible. The Fendt app includes:

- Calibration
- Option to change work recording mode
- Option to change the machine type
- JD Direction switch
- Help page

Where to find the Fendt ISO application on the John Deere monitor:

- On a John Deere 4640 the application will be loaded in the ISOBus VT section on the main page of the display.

- On John Deere 1800, 2600, 2630 the application will be shown in the side menu of the John Deere display. The side menu is opened by clicking the button on the bottom right of the display.

If the ISO application is not loaded:

- Try clearing the monitor's memory. On 2630 monitors this can be done in the Message Center in the side menu. Go to the Cleanup tab, check controllers, then Begin Cleanup. On 4640 monitors this can be done in the info page of the ISOBus VT. Navigate to the ISOBus VT window and click the info button at the top of the page, then press Clean Up ISO Bus VT.
- Do a full restart of the machine. Remember the app may take a few minutes to load.