

USER'S MANUAL

Agra-GPS AGCO-JD Bridge for Fendt One Machines



Version 1.0
Revision A
March 2021



Introduction

Congratulations on your purchase of the AGCO-JD Bridge. The AGCO-JD Bridge is designed to bridge the communication between a AGCO machine (Autosteer ready) and a John Deere display (JD1800, JD2600, JD2630, JD4240 or JD4640). This provides autosteering capabilities and allows a JD display to create maps in the John Deere format.

The operator uses the JD display to create guidance lines. The current position is determined by a John Deere receiver and all this information is used by the AGCO-JD Bridge to create steering instructions for the AGCO machine. All conditions for autosteer such as minimum speed, steering enabled, etc. must be met by the AGCO system before the autosteer engage option in the machine can be activated. The AGCO-JD Bridge has been developed so that the user may use their John Deere equipment with the standard functionality when possible.

NOTICE

This manual is not intended to replace the manuals for the AGCO machine or the John Deere system. The operator must read and understand the manuals and instructions of these systems, before using the AGCO-JD Bridge.

Operating notes for the Agra-GPS AGCO-JD Bridge

For autosteer activation you must follow the "normal" JD steps to be autosteer ready:

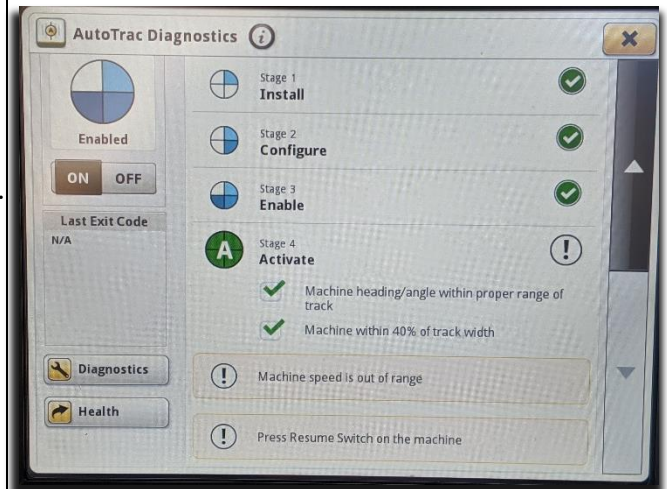
- Create an AB-line
- Move from "Steer OFF" to "Steer ON"
(3 sections of the guidance 'pie') on the JD display.

NOTE: In order to go from "Steer OFF" to "Steer ON" the user must satisfy all guidance requirements for the John Deere monitor. This includes being close to the AB-line.

Your machine must also be in "autosteer ready" mode, which means you must have a field gear selected, drive at a minimum speed and have moved your steering wheel at least once after engine start.

The autosteer is then enabled by pressing the built-in resume button on the throttle control lever.

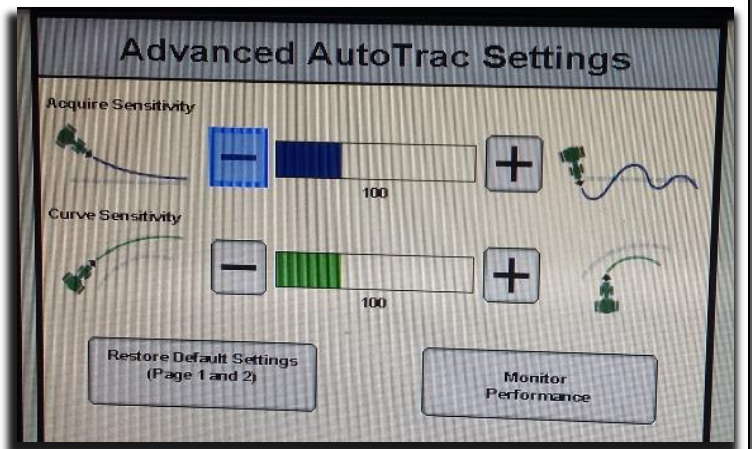
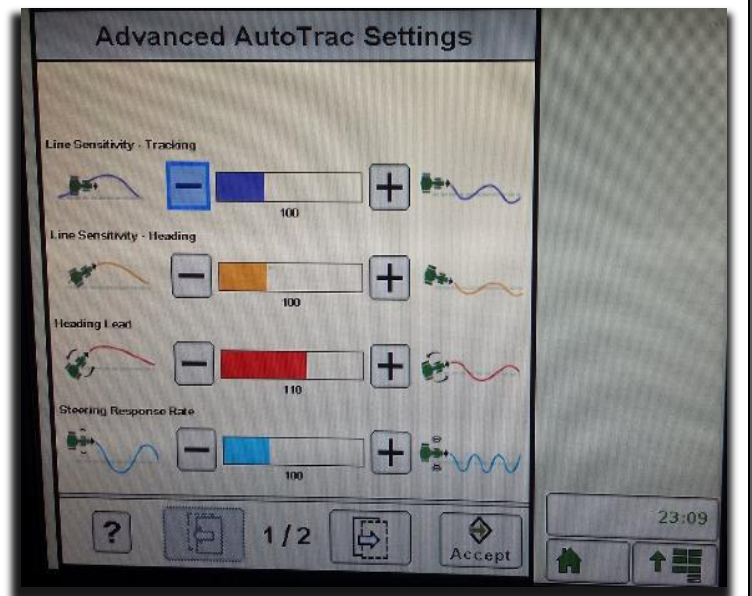
Autosteer settings can be adjusted within the JD display.



Adjusting steering

Using the JD display you may adjust your steering performance. Most machines will perform optimally with all JD settings at 100.

If a change is required, find an open area where you can travel at target speed and adjust one parameter at a time until you are satisfied with the steering performance.



ISO Application

The AGCO bridge comes with an ISO application that will be loaded onto the John Deere monitor. The app should automatically store itself on the monitor after the first few minutes of the initial startup. On subsequent runs the app will load itself from memory as soon as possible. The AGCO app includes:

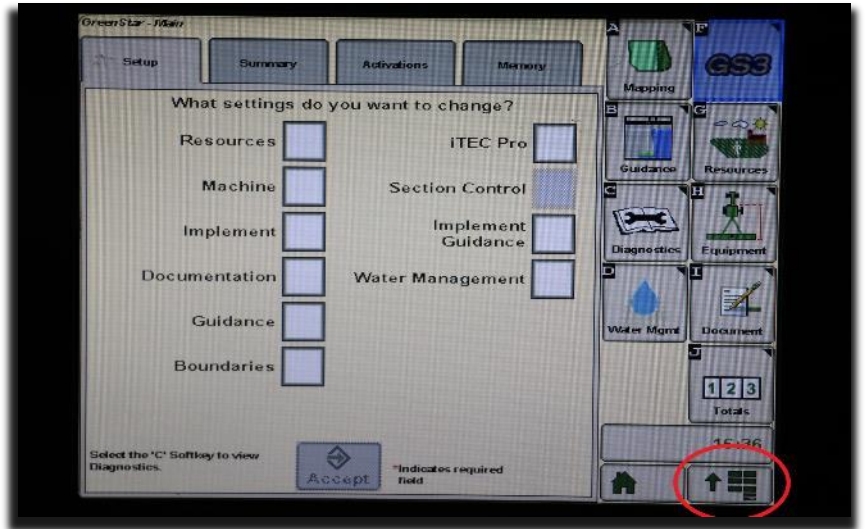
- Option to change the machine type
- Help page
- Support page
- Diagnostic page

Where to find the AGCO ISO application on the John Deere monitor:

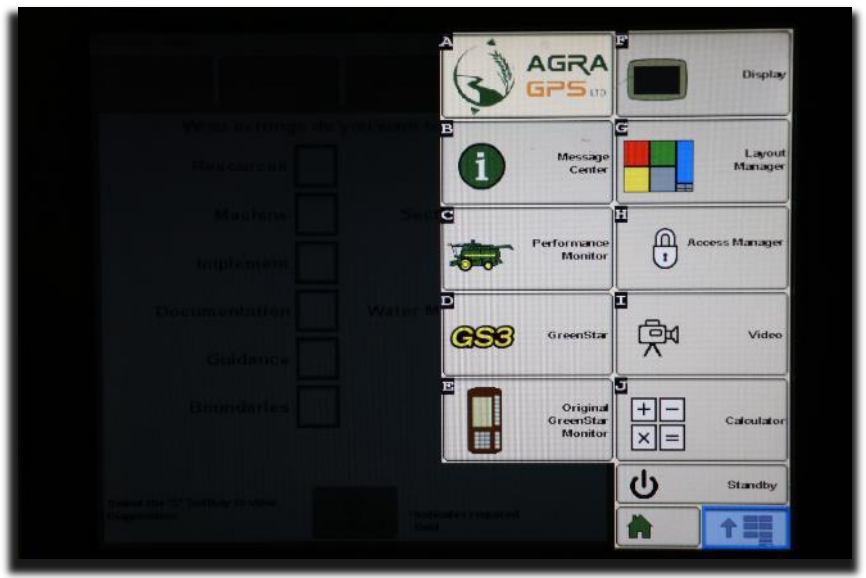
On a John Deere 4640 the application will be loaded in the ISOBus VT section on the main page of the display.



On John Deere 1800, 2600, 2630 the application will be shown in the side menu of the John Deere display. The side menu is opened by clicking the button on the bottom right of the display.



NOTE: John Deere 1800 and 2600 monitors do not show a loading bar for ISO applications, while 2630,4240 and 4640 monitors do.



If the ISO application is not loaded:

- Try clearing the monitor's memory. On 2630 monitors this can be done in the Message Center in the side menu. Go to the Cleanup tab, check controllers, then Begin Cleanup. On 4640 monitors this can be done in the info page of the ISOBus VT. Navigate to the ISOBus VT window and click the info button at the top of the page, then press Clean Up ISO Bus VT.
- Do a hard reset of the John Deere monitor (Unplug it, then plug it back in).
- Do a full restart of the machine. Remember the app may take a few minutes to load.